

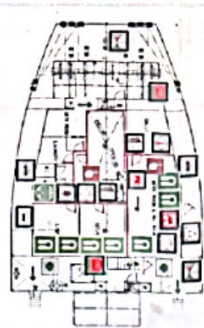
FIRE CONTROL & SAFETY PLAN

SARANA PRIMA

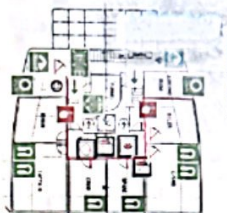
OFFICIAL NO. 336789



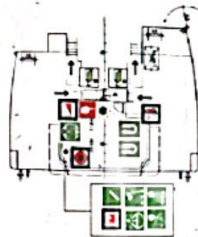
PROFILE PLAN



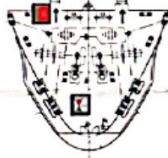
UPPER DECK PLAN



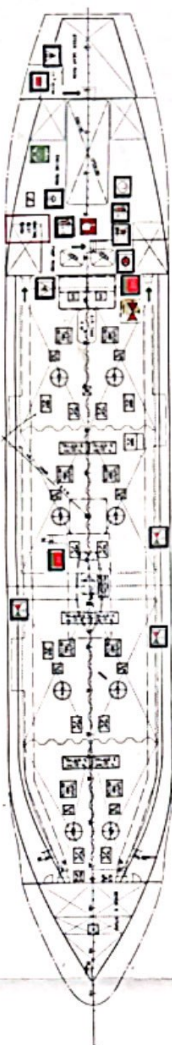
LOWER DECK PLAN



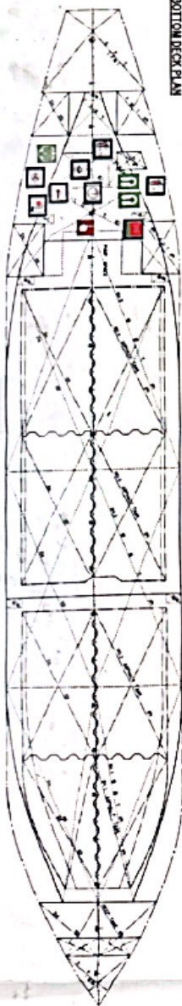
MAIN BRIDGE PLAN



FOREGOAST DECK PLAN



UPPER DECK PLAN



BOTTOM DECK PLAN

Particulars

LENGTH 65.00 M
 BREADTH 11.50 M
 DEPTH 4.60 M
 DRAWT 4.282M
 GROSS TONNAGE 1062
 COMPLEMENT 13 CREW

SIRI CLASSIFICATION MALAYSIA
APPROVED
 No. 17/2004/7976
 SCHEM: M-II-017

| THE LIVING APARTMENTS AND RECREATION AREA | |
|---|-----------------------------|
| 1 | RECREATION DECK (REAR) |
| 2 | RECREATION DECK (FORWARD) |
| 3 | RECREATION DECK (MID) |
| 4 | RECREATION DECK (AFT) |
| 5 | RECREATION DECK (STARBOARD) |
| 6 | RECREATION DECK (PORT) |
| 7 | RECREATION DECK (MID) |
| 8 | RECREATION DECK (FORWARD) |
| 9 | RECREATION DECK (REAR) |
| 10 | RECREATION DECK (MID) |
| 11 | RECREATION DECK (FORWARD) |
| 12 | RECREATION DECK (REAR) |
| 13 | RECREATION DECK (MID) |
| 14 | RECREATION DECK (FORWARD) |
| 15 | RECREATION DECK (REAR) |
| 16 | RECREATION DECK (MID) |
| 17 | RECREATION DECK (FORWARD) |
| 18 | RECREATION DECK (REAR) |
| 19 | RECREATION DECK (MID) |
| 20 | RECREATION DECK (FORWARD) |
| 21 | RECREATION DECK (REAR) |
| 22 | RECREATION DECK (MID) |
| 23 | RECREATION DECK (FORWARD) |
| 24 | RECREATION DECK (REAR) |
| 25 | RECREATION DECK (MID) |
| 26 | RECREATION DECK (FORWARD) |
| 27 | RECREATION DECK (REAR) |
| 28 | RECREATION DECK (MID) |
| 29 | RECREATION DECK (FORWARD) |
| 30 | RECREATION DECK (REAR) |
| 31 | RECREATION DECK (MID) |
| 32 | RECREATION DECK (FORWARD) |
| 33 | RECREATION DECK (REAR) |
| 34 | RECREATION DECK (MID) |
| 35 | RECREATION DECK (FORWARD) |
| 36 | RECREATION DECK (REAR) |
| 37 | RECREATION DECK (MID) |
| 38 | RECREATION DECK (FORWARD) |
| 39 | RECREATION DECK (REAR) |
| 40 | RECREATION DECK (MID) |
| 41 | RECREATION DECK (FORWARD) |
| 42 | RECREATION DECK (REAR) |
| 43 | RECREATION DECK (MID) |
| 44 | RECREATION DECK (FORWARD) |
| 45 | RECREATION DECK (REAR) |
| 46 | RECREATION DECK (MID) |
| 47 | RECREATION DECK (FORWARD) |
| 48 | RECREATION DECK (REAR) |
| 49 | RECREATION DECK (MID) |
| 50 | RECREATION DECK (FORWARD) |
| 51 | RECREATION DECK (REAR) |
| 52 | RECREATION DECK (MID) |
| 53 | RECREATION DECK (FORWARD) |
| 54 | RECREATION DECK (REAR) |
| 55 | RECREATION DECK (MID) |
| 56 | RECREATION DECK (FORWARD) |
| 57 | RECREATION DECK (REAR) |
| 58 | RECREATION DECK (MID) |
| 59 | RECREATION DECK (FORWARD) |
| 60 | RECREATION DECK (REAR) |
| 61 | RECREATION DECK (MID) |
| 62 | RECREATION DECK (FORWARD) |
| 63 | RECREATION DECK (REAR) |
| 64 | RECREATION DECK (MID) |
| 65 | RECREATION DECK (FORWARD) |
| 66 | RECREATION DECK (REAR) |
| 67 | RECREATION DECK (MID) |
| 68 | RECREATION DECK (FORWARD) |
| 69 | RECREATION DECK (REAR) |
| 70 | RECREATION DECK (MID) |
| 71 | RECREATION DECK (FORWARD) |
| 72 | RECREATION DECK (REAR) |
| 73 | RECREATION DECK (MID) |
| 74 | RECREATION DECK (FORWARD) |
| 75 | RECREATION DECK (REAR) |
| 76 | RECREATION DECK (MID) |
| 77 | RECREATION DECK (FORWARD) |
| 78 | RECREATION DECK (REAR) |
| 79 | RECREATION DECK (MID) |
| 80 | RECREATION DECK (FORWARD) |
| 81 | RECREATION DECK (REAR) |
| 82 | RECREATION DECK (MID) |
| 83 | RECREATION DECK (FORWARD) |
| 84 | RECREATION DECK (REAR) |
| 85 | RECREATION DECK (MID) |
| 86 | RECREATION DECK (FORWARD) |
| 87 | RECREATION DECK (REAR) |
| 88 | RECREATION DECK (MID) |
| 89 | RECREATION DECK (FORWARD) |
| 90 | RECREATION DECK (REAR) |
| 91 | RECREATION DECK (MID) |
| 92 | RECREATION DECK (FORWARD) |
| 93 | RECREATION DECK (REAR) |
| 94 | RECREATION DECK (MID) |
| 95 | RECREATION DECK (FORWARD) |
| 96 | RECREATION DECK (REAR) |
| 97 | RECREATION DECK (MID) |
| 98 | RECREATION DECK (FORWARD) |
| 99 | RECREATION DECK (REAR) |
| 100 | RECREATION DECK (MID) |

| THE EXTERIOR EQUIPMENT | |
|------------------------|-----------------------------|
| 1 | RECREATION DECK (REAR) |
| 2 | RECREATION DECK (FORWARD) |
| 3 | RECREATION DECK (MID) |
| 4 | RECREATION DECK (AFT) |
| 5 | RECREATION DECK (STARBOARD) |
| 6 | RECREATION DECK (PORT) |
| 7 | RECREATION DECK (MID) |
| 8 | RECREATION DECK (FORWARD) |
| 9 | RECREATION DECK (REAR) |
| 10 | RECREATION DECK (MID) |
| 11 | RECREATION DECK (FORWARD) |
| 12 | RECREATION DECK (REAR) |
| 13 | RECREATION DECK (MID) |
| 14 | RECREATION DECK (FORWARD) |
| 15 | RECREATION DECK (REAR) |
| 16 | RECREATION DECK (MID) |
| 17 | RECREATION DECK (FORWARD) |
| 18 | RECREATION DECK (REAR) |
| 19 | RECREATION DECK (MID) |
| 20 | RECREATION DECK (FORWARD) |
| 21 | RECREATION DECK (REAR) |
| 22 | RECREATION DECK (MID) |
| 23 | RECREATION DECK (FORWARD) |
| 24 | RECREATION DECK (REAR) |
| 25 | RECREATION DECK (MID) |
| 26 | RECREATION DECK (FORWARD) |
| 27 | RECREATION DECK (REAR) |
| 28 | RECREATION DECK (MID) |
| 29 | RECREATION DECK (FORWARD) |
| 30 | RECREATION DECK (REAR) |
| 31 | RECREATION DECK (MID) |
| 32 | RECREATION DECK (FORWARD) |
| 33 | RECREATION DECK (REAR) |
| 34 | RECREATION DECK (MID) |
| 35 | RECREATION DECK (FORWARD) |
| 36 | RECREATION DECK (REAR) |
| 37 | RECREATION DECK (MID) |
| 38 | RECREATION DECK (FORWARD) |
| 39 | RECREATION DECK (REAR) |
| 40 | RECREATION DECK (MID) |
| 41 | RECREATION DECK (FORWARD) |
| 42 | RECREATION DECK (REAR) |
| 43 | RECREATION DECK (MID) |
| 44 | RECREATION DECK (FORWARD) |
| 45 | RECREATION DECK (REAR) |
| 46 | RECREATION DECK (MID) |
| 47 | RECREATION DECK (FORWARD) |
| 48 | RECREATION DECK (REAR) |
| 49 | RECREATION DECK (MID) |
| 50 | RECREATION DECK (FORWARD) |
| 51 | RECREATION DECK (REAR) |
| 52 | RECREATION DECK (MID) |
| 53 | RECREATION DECK (FORWARD) |
| 54 | RECREATION DECK (REAR) |
| 55 | RECREATION DECK (MID) |
| 56 | RECREATION DECK (FORWARD) |
| 57 | RECREATION DECK (REAR) |
| 58 | RECREATION DECK (MID) |
| 59 | RECREATION DECK (FORWARD) |
| 60 | RECREATION DECK (REAR) |
| 61 | RECREATION DECK (MID) |
| 62 | RECREATION DECK (FORWARD) |
| 63 | RECREATION DECK (REAR) |
| 64 | RECREATION DECK (MID) |
| 65 | RECREATION DECK (FORWARD) |
| 66 | RECREATION DECK (REAR) |
| 67 | RECREATION DECK (MID) |
| 68 | RECREATION DECK (FORWARD) |
| 69 | RECREATION DECK (REAR) |
| 70 | RECREATION DECK (MID) |
| 71 | RECREATION DECK (FORWARD) |
| 72 | RECREATION DECK (REAR) |
| 73 | RECREATION DECK (MID) |
| 74 | RECREATION DECK (FORWARD) |
| 75 | RECREATION DECK (REAR) |
| 76 | RECREATION DECK (MID) |
| 77 | RECREATION DECK (FORWARD) |
| 78 | RECREATION DECK (REAR) |
| 79 | RECREATION DECK (MID) |
| 80 | RECREATION DECK (FORWARD) |
| 81 | RECREATION DECK (REAR) |
| 82 | RECREATION DECK (MID) |
| 83 | RECREATION DECK (FORWARD) |
| 84 | RECREATION DECK (REAR) |
| 85 | RECREATION DECK (MID) |
| 86 | RECREATION DECK (FORWARD) |
| 87 | RECREATION DECK (REAR) |
| 88 | RECREATION DECK (MID) |
| 89 | RECREATION DECK (FORWARD) |
| 90 | RECREATION DECK (REAR) |
| 91 | RECREATION DECK (MID) |
| 92 | RECREATION DECK (FORWARD) |
| 93 | RECREATION DECK (REAR) |
| 94 | RECREATION DECK (MID) |
| 95 | RECREATION DECK (FORWARD) |
| 96 | RECREATION DECK (REAR) |
| 97 | RECREATION DECK (MID) |
| 98 | RECREATION DECK (FORWARD) |
| 99 | RECREATION DECK (REAR) |
| 100 | RECREATION DECK (MID) |

| SARANA PRIMA | |
|--|---------------------------|
| PELAN KAWALAN PERBAKARAN & PELAN KESELAMATAN | |
| OWNER | LC MARITIME SON BID |
| SHIPYARD | MERAKAM HIRE SHIPBUILDING |
| REV | DRAWING NO |
| 1 | FCSP-17-001 |
| PAGE | |